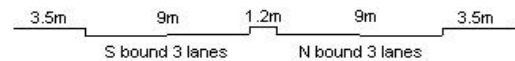


YEAR

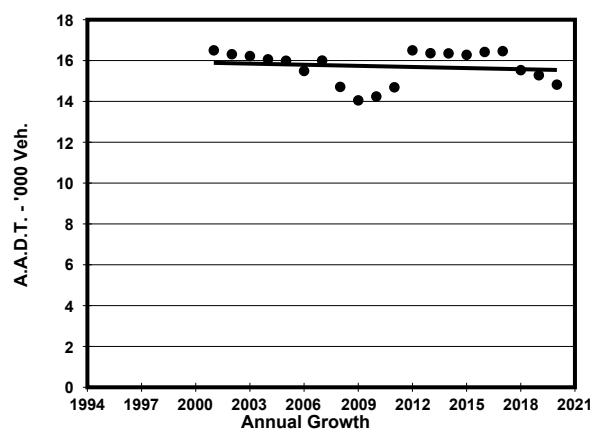
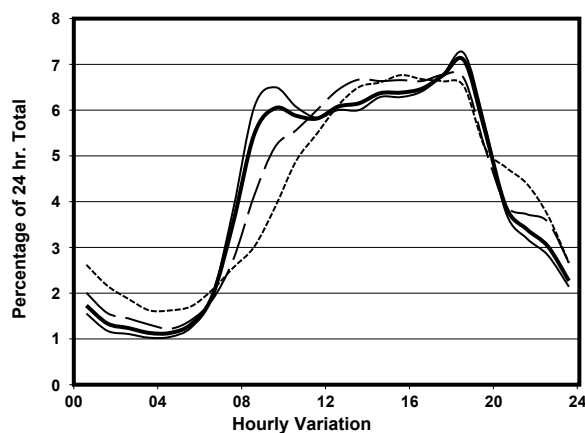
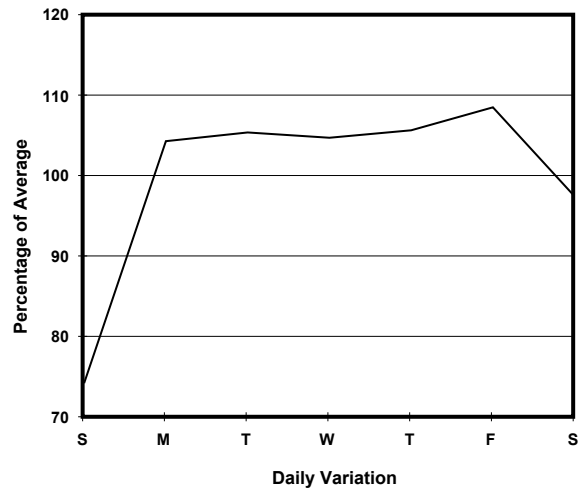
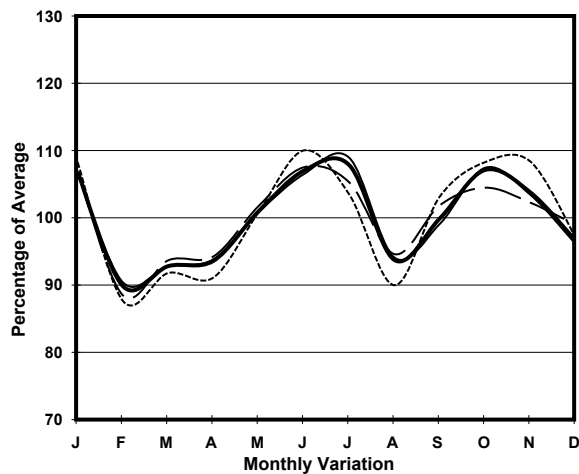
2020

LINK

LAI CHI KOK RD (from TONKIN ST to HING WAH ST)

CORE STATION
ROAD NETWORK
ROAD TYPE3008
MAJOR
PRIMARY DISTRIBUTOR

1. TRAFFIC FLOW VARIATION AND GROWTH



— All day - - - - - Mon. - Fri. Sat. - . - . - . Sun.

2. TRAFFIC CHARACTERISTICS (BY DIRECTION)

Parameter	All - Day	Mon. - Fri.	Sat.	Sun.
SOUTH BOUND				
A.A.D.T.	5820	6070	6040	4930
R 12 / 24 - %	70.1	71	69.2	65.5
R 16 / 24 - %	85.9	86.6	85.1	82.5
AM Peak Hour	0900-1000	0900-1000	0900-1000	0900-1000
One-way flow at AM peak hour	310	350	290	190
T - % (AM)	-	-	-	-
PM Peak Hour	1700-1800	1800-1900	1600-1700	1600-1700
One-way flow at PM peak hour	380	400	400	340
T - % (PM)	-	-	-	-
Prop.of commercial vehicles - 16 hr.	-	-	-	-
NORTH BOUND				
A.A.D.T.	9000	9800	8580	6240
R 12 / 24 - %	73.3	74.7	70.8	65.8
R 16 / 24 - %	89.2	90.1	87.5	84.6
AM Peak Hour	0900-1000	0900-1000	0900-1000	0900-1000
One-way flow at AM peak hour	580	680	470	250
T - % (AM)	-	-	-	-
PM Peak Hour	1800-1900	1800-1900	1800-1900	1600-1700
One-way flow at PM peak hour	670	750	590	410
T - % (PM)	-	-	-	-
Prop.of commercial vehicles - 16 hr.	-	-	-	-

3. OTHER INFORMATION AND COMMENT